

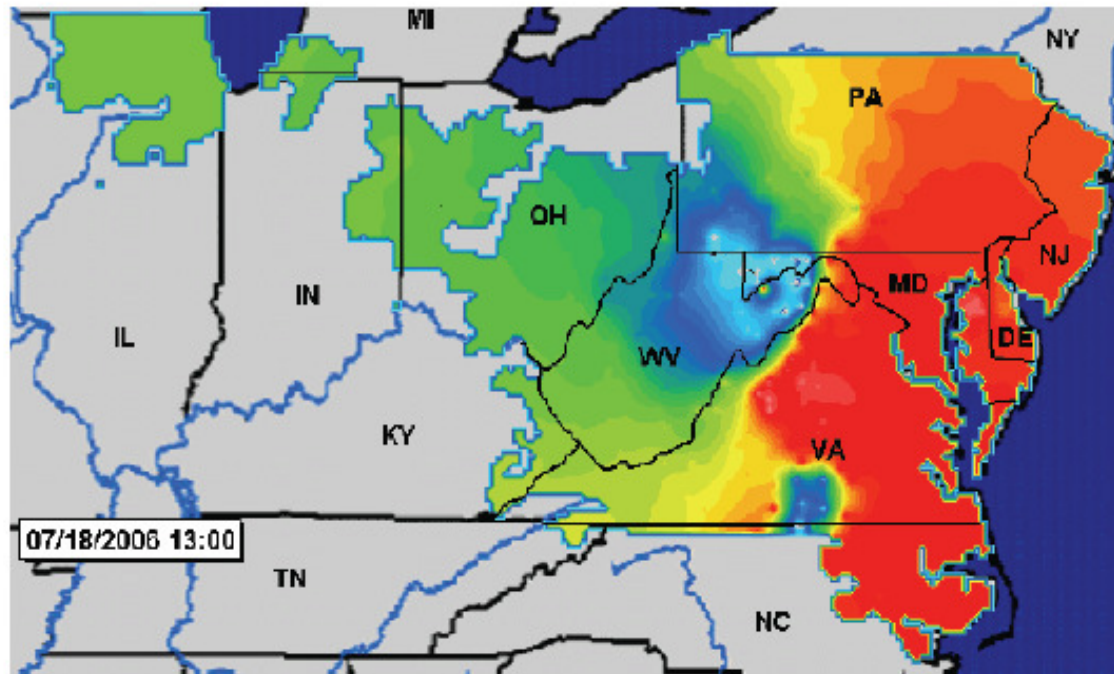
# Transmission The Basic Environmental Issues

Mark Brownstein  
Deputy Director - Energy Program



# PJM System With Congestion

(Least Cost Generation Can't be Delivered to the Load)



## LMP Price Range\*

(Locational Marginal Price)

Blue \$0 - \$50

Green \$50 - \$100

Yellow \$100 - \$130

Orange \$130 - \$170

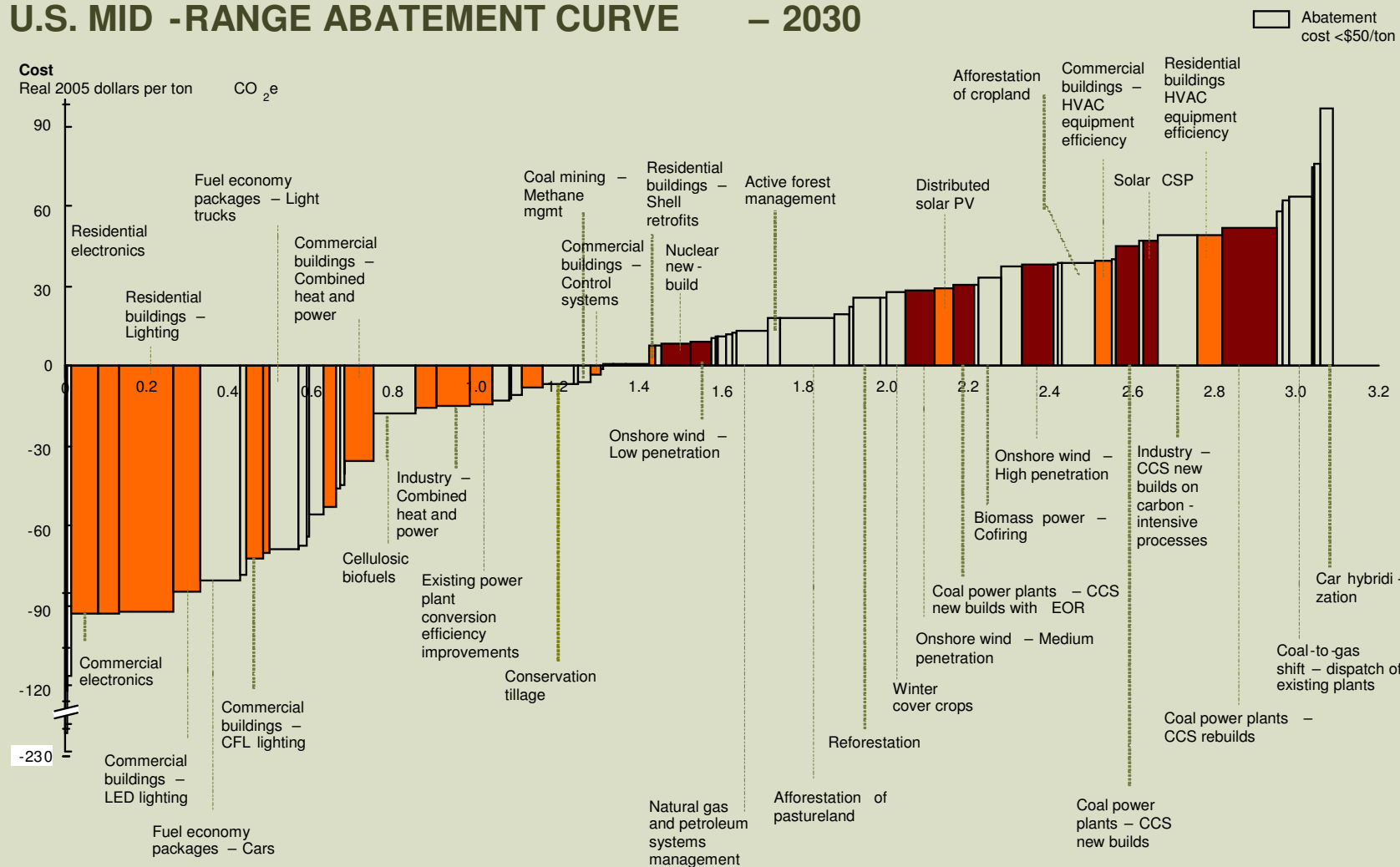
Red \$170 - \$500

\* Colors are representative of the LMP prices.

# Solutions Without Transmission

Exhibit B

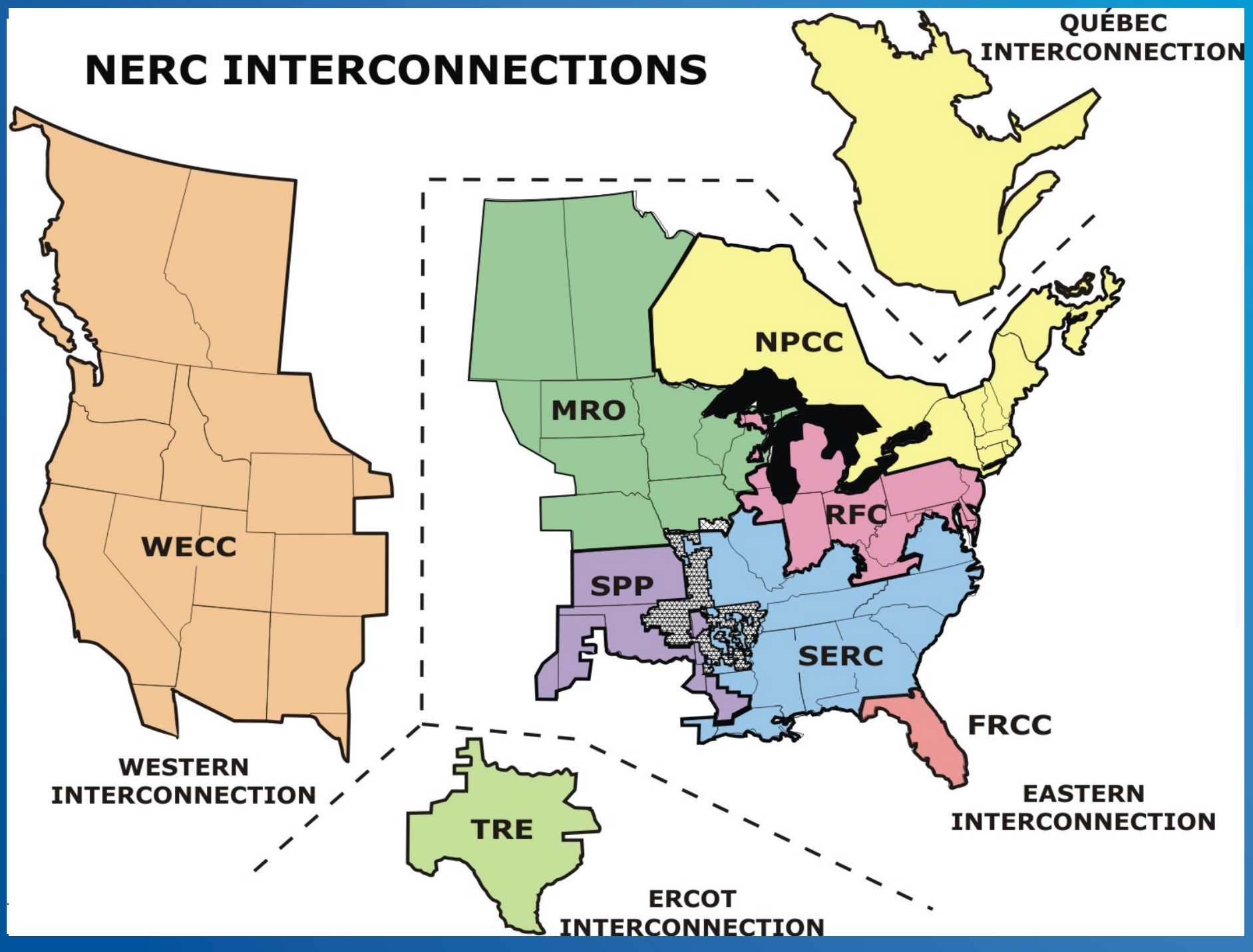
## U.S. MID - RANGE ABATEMENT CURVE – 2030



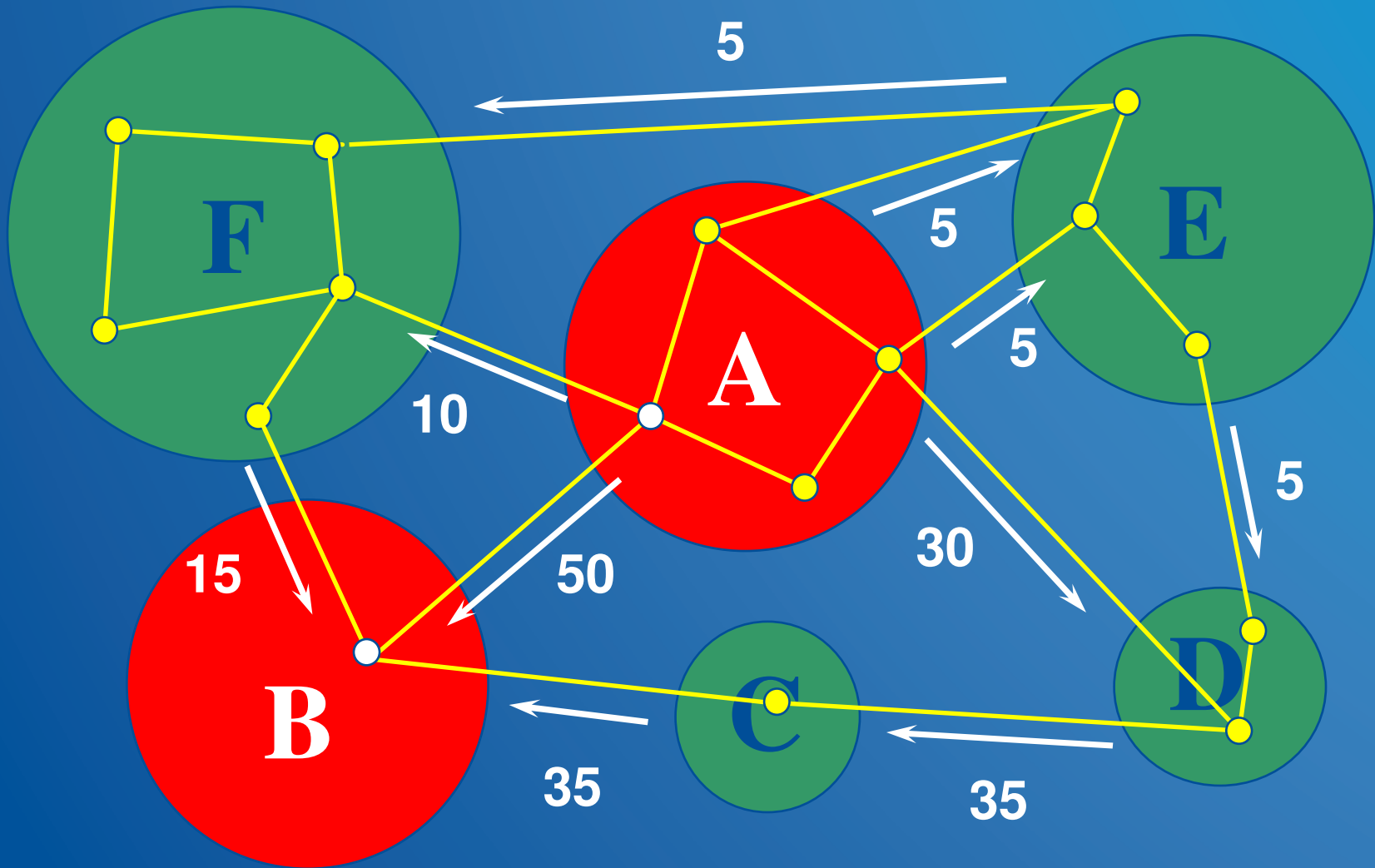
Source: McKinsey analysis

Working Draft - Last Modified: 11/28/2007 12:21:57 PM Printed: 11/17/2007 9:15:15 PM

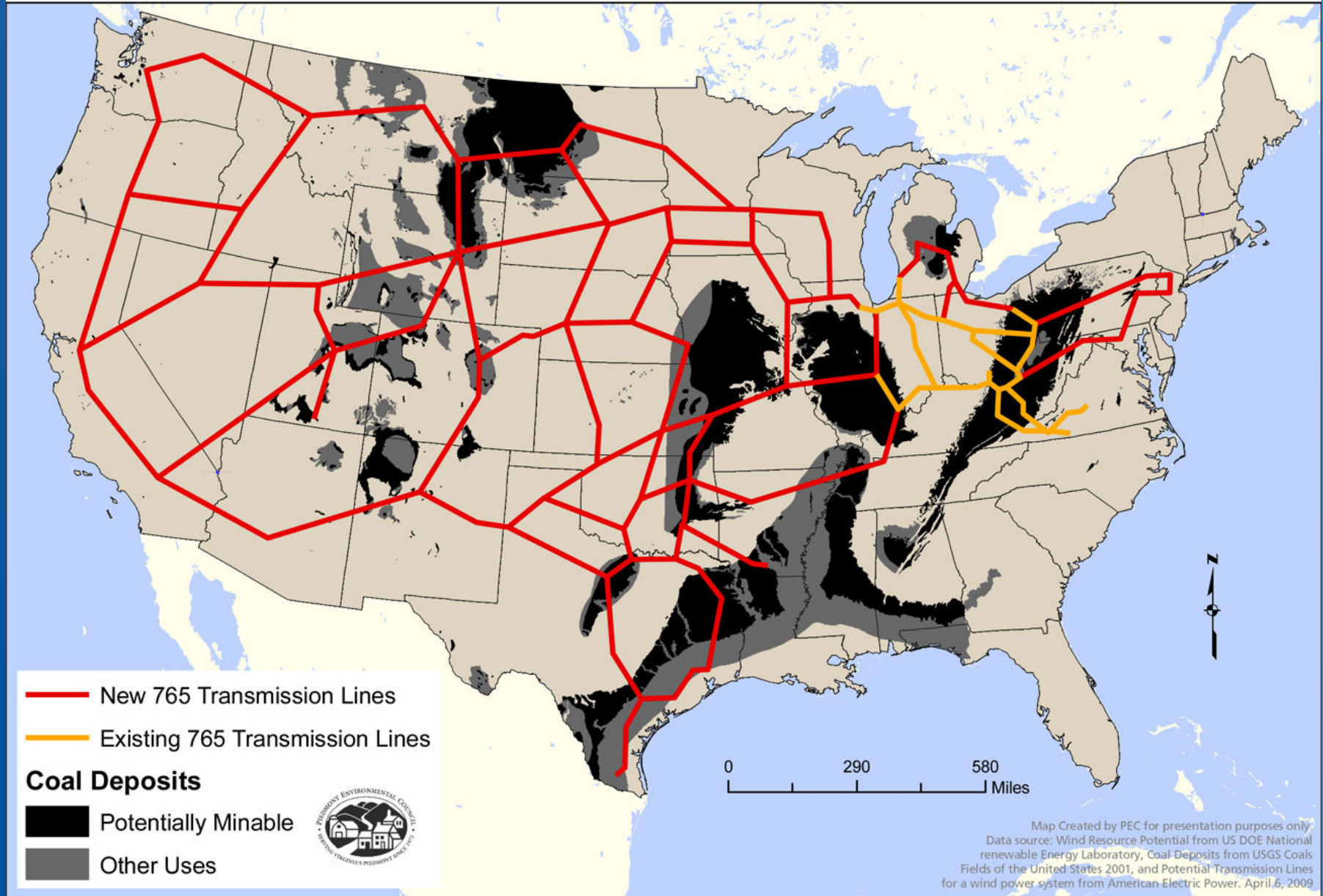
# NERC INTERCONNECTIONS



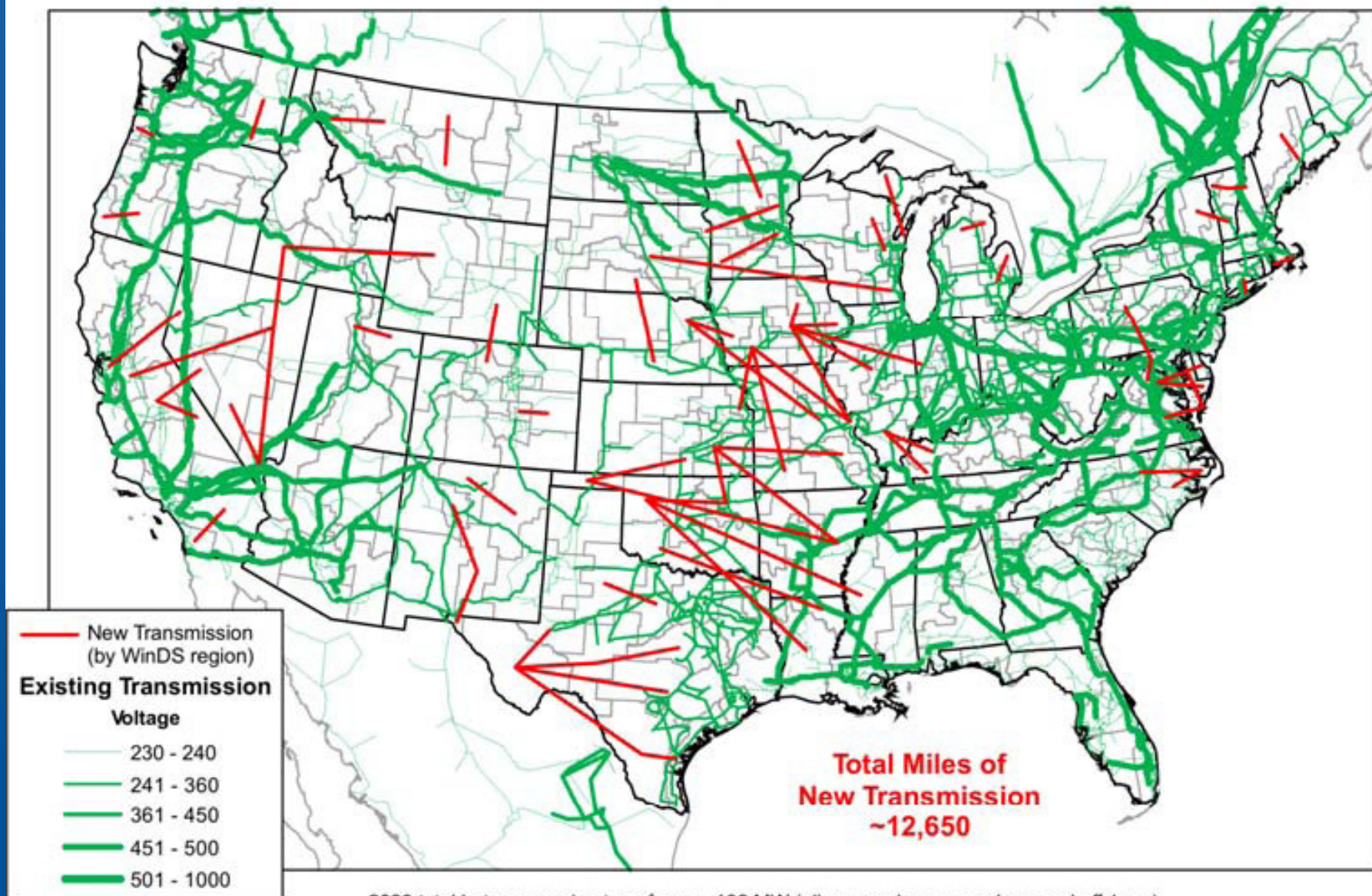
# 100 MW From A to B



## ...or is it for Coal?



# 2030 - New Transmission Lines - WinDS Region Level - Simplified Corridors $\geq 100$ MW



Existing Transmission Data: POWERmap, powermap.platts.com ©2007 Platts, A Division of The McGraw-Hill Companies

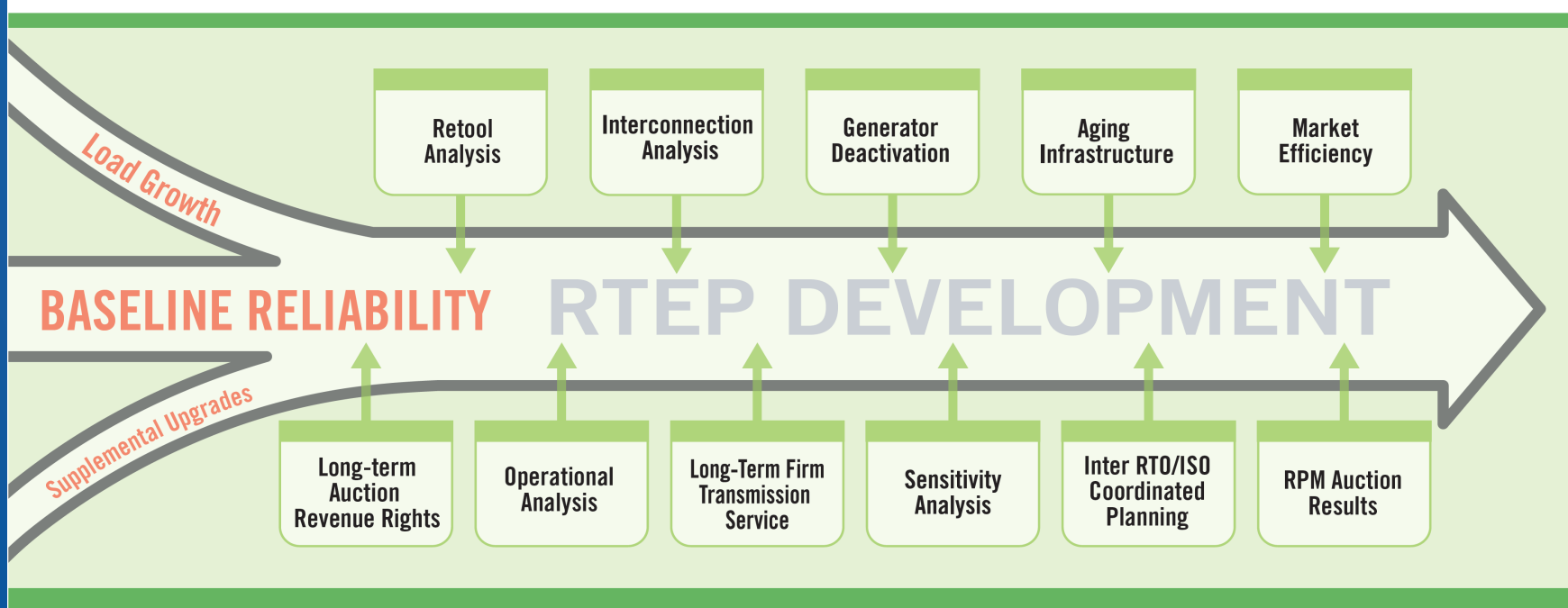
2030 total between region transfers  $\geq 100$  MW (all power classes, onshore and offshore), visually simplified to minimal paths. Arrows originate and terminate at the centroid of the region for visualization purposes; they do not represent physical locations of transmission lines.





# Current Planning PJM

Figure 1.2: RTEP Development Drivers



- Primary Focus on Reliability
- 5 and 15 Year Forward Look
- Regional Perspective
- 69 kV or Greater
- DR and EE To Be Included
- Inter-regional Planning: A Work in Progress