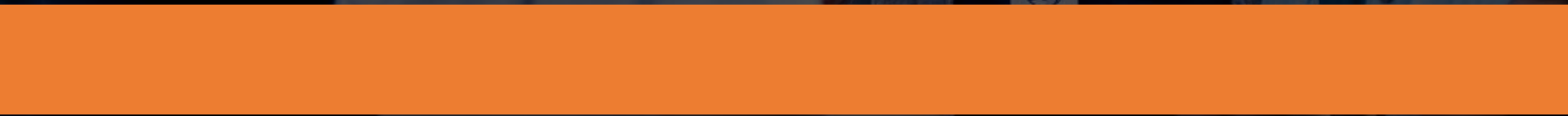




EPA's Environmental and Climate Justice Community Change Grants Program



Today we'll cover...

1. Community Change Grants

- What are the Community Change Grants?
- Notice of Funding Opportunity

2. Eligibility

- Who can apply?
- How It Works

3. Track I

- Track I Requirements
- Eligible Project Examples
- Climate Action Strategies
- Pollution Reduction Strategies

4. Track II

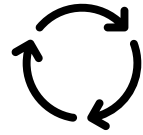
- Track II Requirements
- Eligible Project Examples

5. Final thoughts

Community Change Grants



\$2 billion of
funding
available



Applications
accepted on a
rolling basis



Application deadline
is November 21st,
2024

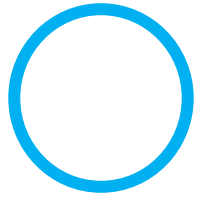


NOFO allows for a
maximum of two
applications per
lead applicant



Project duration
must be 3 years or
less

Notice of Funding Opportunity (NOFO)

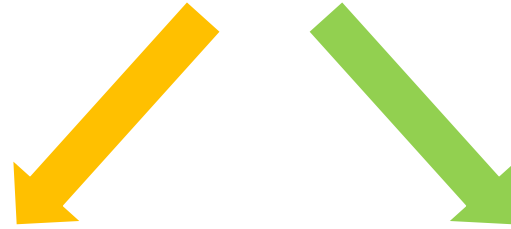


Track I

Community-Driven
Investments for
Change

\$10-20 million

Grant Categories



Track II

Meaningful
Engagement for
Equitable Governance

\$1-3 million

- Approx. 150 awardees
- \$1.96 billion available in funding

- Approx. 20 awardees
- \$40 million available in funding

\$150 million for Tribes in Alaska; \$300 million for Tribal communities in other states

Who can apply?

A partnership between two community-based nonprofit organizations (CBOs)

OR

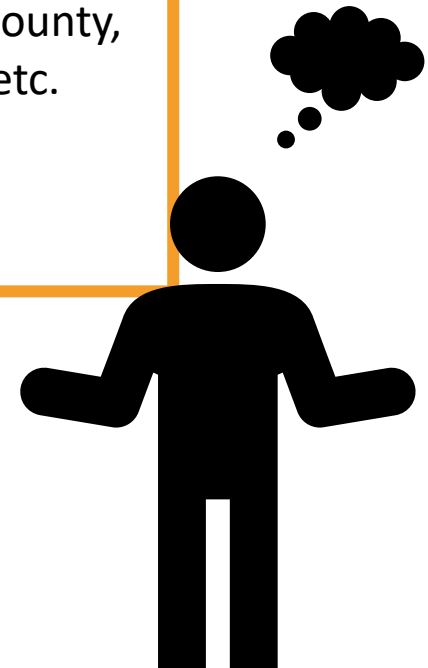
A partnership between a CBO and one of the following:

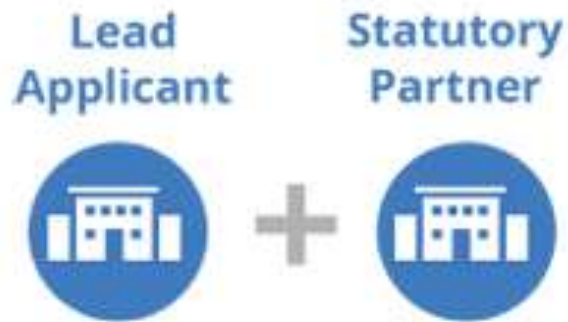
CBO requirements:

1. A non-profit organization
2. Supports and/or represents a certain community
3. Geographic presence or relationship with the specified community the projects are intended to benefit.

- A federally recognized Tribe
- A local government (e.g., county, city, town, school district, etc.)
- An institution of higher education

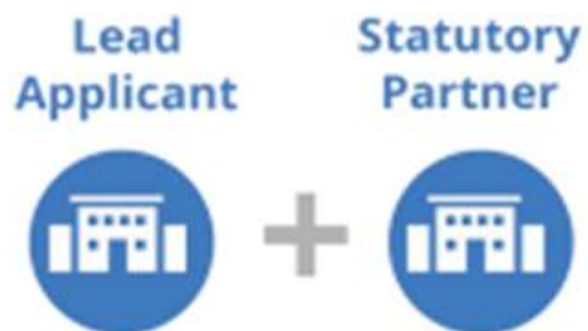
Any of these partnerships is known as a **Statutory Partnership** for eligibility purposes.





How It Works

FORM A STATUTORY
PARTNERSHIP



IDENTIFY COLLABORATING ENTITIES
TO LEAD PROJECTS



THE COLLABORATIVE



Lead Applicant

Statutory Partner



Collaborating Entities

Applicants must demonstrate that the projects in their application will benefit a disadvantaged community.

EPA considers a community disadvantaged if is:

a geographically-defined community identified on the EPA IRA Disadvantaged Communities Map

a farmworker community, e.g., seasonal workers with no fixed work address

a “Disadvantaged Unincorporated Community” - lacks fixed legally determined geographic boundaries and has certain common characteristics and conditions (e.g., the absence of adequate permanent water, sewer services, or acceptable housing)

Track I Requirements

Track 1 applications should be rooted in addressing specific, community-driven environmental justice challenges.

Climate Action Strategies

- Green infrastructure and nature-based solutions
- Mobility and transportation options
- Energy-efficient, healthy, and resilient housing and buildings
- Microgrid installation for community energy resilience
- Community resilience hubs
- Brownfield development for emissions reduction and climate resilience
- Waste reduction and management
- Workforce development programs for occupations that reduce greenhouse gas emissions and air pollutants

Pollution Reduction Strategies

- Indoor and outdoor air quality & community health improvements
- Clean water infrastructure
- Safe management and disposal of solid and hazardous waste



Track I Project Examples

*the following slides contain some of the
examples provided in the Notice of
Funding Opportunity, which are too
extensive to reproduce fully in this
presentation*



Climate Action Strategies

Appendix C

Green Infrastructure and Nature-Based Solutions



Building climate resilience and carbon sequestration through tree planting

Examples:

- Plant trees in public spaces
- Plant trees strategically to shade buildings



Multi-benefit stormwater projects


Examples:

- Restore and/or protect wetlands
- Construct permeable surfaces, collection basins, rain gardens, bioswales, and other green infrastructure

Public parks and open spaces

Examples:

- Create new parks or enhance/expand existing parks to provide climate resilience
- Green existing school yards to protect vulnerable populations by adding nature-based solutions



Mobility and Transportation Options for Preventing Air Pollution and Improving Public Health and Climate Resilience

Examples

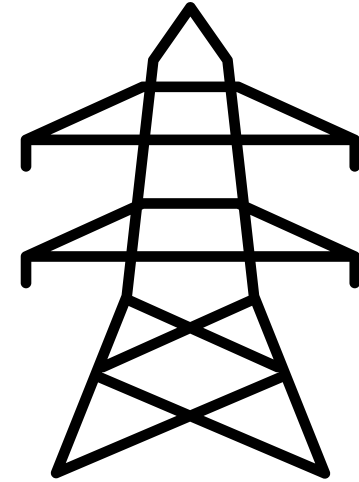
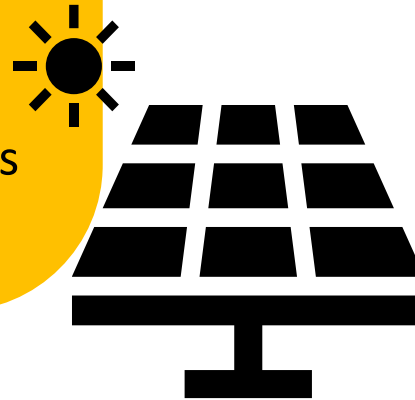
- **Construct new, expanded, or enhanced bikeways, walkways, or non motorized urban trails** that reduce vehicle miles traveled and related air pollution
- Purchase, lease, or contract for the use of **zero-emission vehicles for community car sharing, vanpooling, ride-sharing**
- Purchase, construct, and/or install **infrastructure, equipment, or facilities to create and/or support low or zero-emission transportation options**



Energy-efficient, Healthy, Resilient Housing and Buildings

Examples:

- Install energy efficient measures such as **insulation, double or triple glazed windows, “cool roofs,”** and **energy management systems** in public buildings
- Install or retrofit homes or multi-family housing with **higher-efficiency electric heating, cooling and cooking systems**
- Install **ventilation systems** to help improve indoor air quality during pollution related events such as wildfires



Microgrid Installation for Community Energy Resilience

Examples:

Construct microgrid infrastructure

Install microgrids with onsite renewable energy generation and storage

Install ancillary energy infrastructure necessary to support microgrids

Install other energy infrastructure for microgrid operations

Community Resilience Hubs

Examples:

1

Assess the most acute climate risks facing a community

2

Identify where the community has gaps in its resilience strategy

3

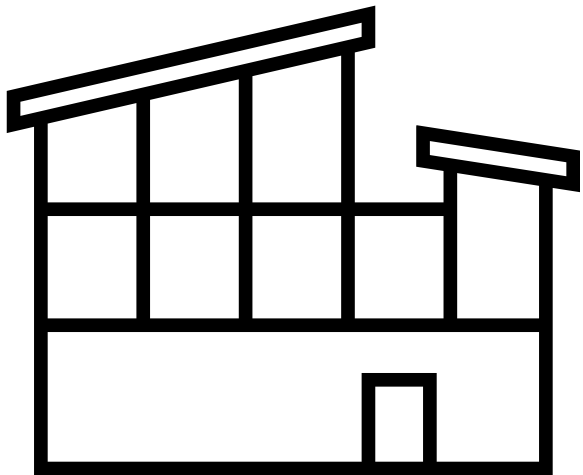
Then **design** a plan to mitigate specific risks by creating or upgrading community facilities to serve as resilience hubs that remain operable during an emergency

Purchase and install:

Backup power equipment such as generators or onsite solar and storage at one or more resilience hubs

Communication devices that can operate even with loss of local power and telecommunications systems

Brownfields Redevelopment



Examples:

- **Build and/or upgrade existing structures and sites** to improve community use while reducing GHG emissions and/or improving climate resilience
- **Acquire land to enable a brownfield redevelopment** that has emissions mitigation and/or climate resilience benefits
- **Install low or zero emission energy infrastructure** such as solar and storage
- Implement greening efforts (**tree-planting, park construction or renovations, community garden developments, etc.**) that mitigate GHG emissions and/or improve climate resilience

Examples:

- Implement a community-scale **composting program** to reduce emissions from food waste that includes an educational campaign to inform Project Area residents about climate benefits to reducing food waste
- Implement a community-scale **recycling program**
- Reduce emissions from food waste by implementing programs that **distribute unused food** to project area residents

Waste
Reduction and
Management
to Support a
Circular
Economy

Workforce Development Programs

Propose workforce development programs that will help reduce GHG emissions and other air pollutants that to benefit disadvantaged communities.

Example career pathways that may be part of a workforce development program include:

Electricians

Steamfitters

Pipefitters

Laborers

Other skilled trade occupations

Occupations related to the manufacturing of low- and zero-emission technologies

Careers in low- and zero-emissions transportation

Community health and outreach workers



Pollution Reduction Strategies

Appendix D



Indoor Air Quality and Community Health Improvements

Examples

- **Remediate or mitigate harmful substances in buildings**
- **Install, upgrade, or replace HVAC and/or filtration systems** in schools, community buildings, and homes
- **Equip community centers and community buildings in agricultural worker communities with decontamination stations** to eliminate take-home pesticide exposures
- **Replace wood heaters** that do not meet EPA's new source performance standards with more efficient, cleaner heaters



Outdoor Air Quality and Community Health Improvements

Examples:

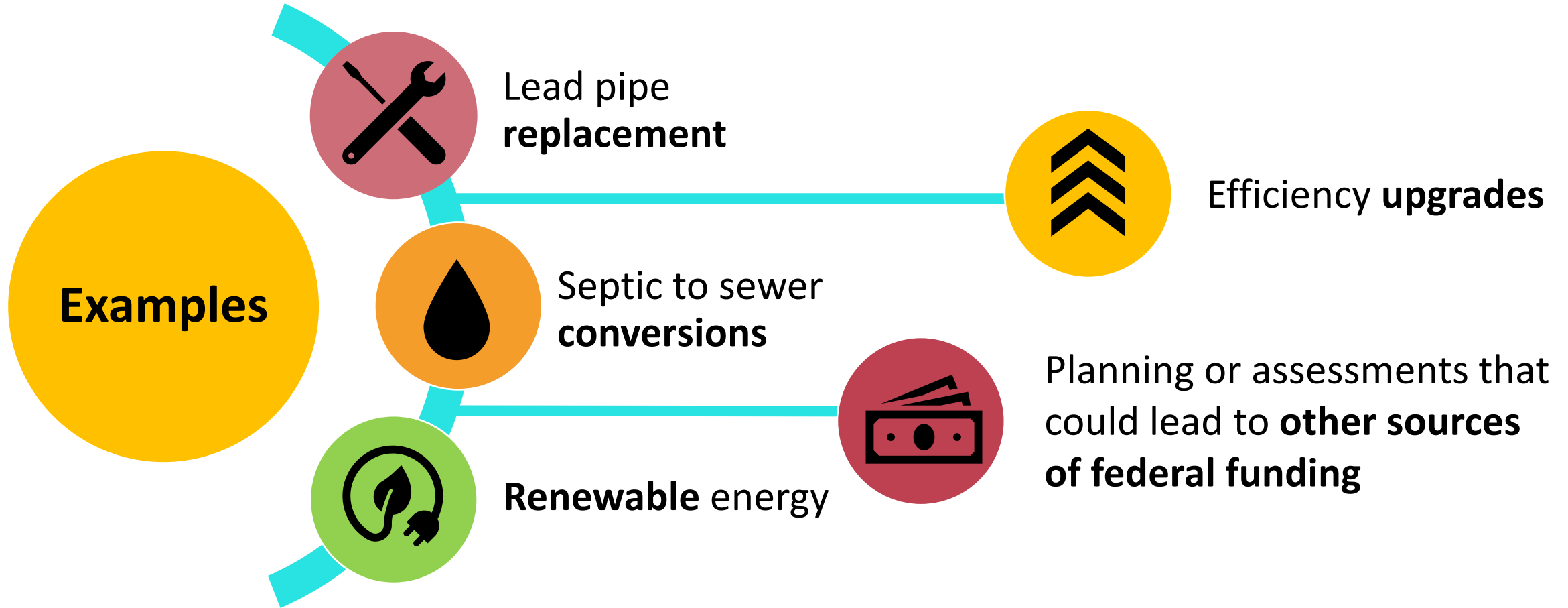
Reduce exposure from mobile and stationary sources

Implement sustainable construction practices such as minimizing dust and emissions during building projects

Create clean air zones or low-emission zones

Replace toxic play surfaces that emit harmful pollutant with non-toxic permeable options to provide safe places for children to play

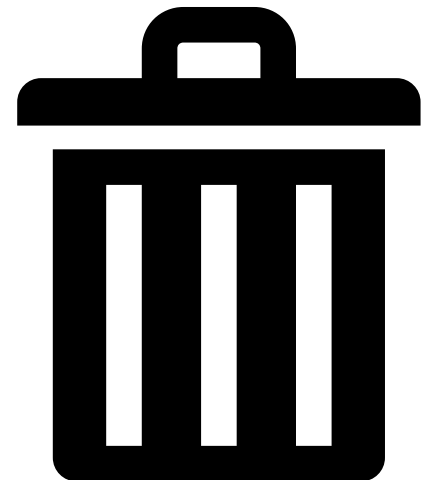
Clean Water Infrastructure



Safe Management and Disposal of Solid and Hazardous Waste

Examples:

- Collect, process, or otherwise dispose of **household hazardous waste** and **electronics programs** and infrastructure
- Develop or expand **hazardous waste collection, recycling and safe recycling** programs and infrastructure
- Reduce demand for **single-use plastic products** (e.g., installing public water bottle refill stations or water fountains, etc.), and phasing out single-use products that may be unnecessary





TRACK II

Meaningful Engagement for Equitable Governance

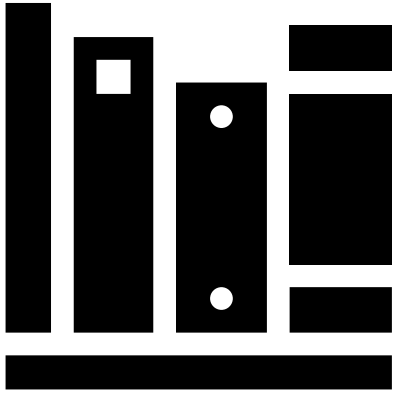
Track II applications are intended to build the capacity of communities and governments to evaluate and redress environmental and climate injustices by giving disadvantaged communities a meaningful voice in government decision-making processes.

- Capacity building and help closing equity gaps
- Breaking down system barriers to community participation in government processes impacting environmental and climate justice
- Facilitate the engagement of disadvantaged communities in governmental processes to advance environmental and climate justice



Track II Project Examples

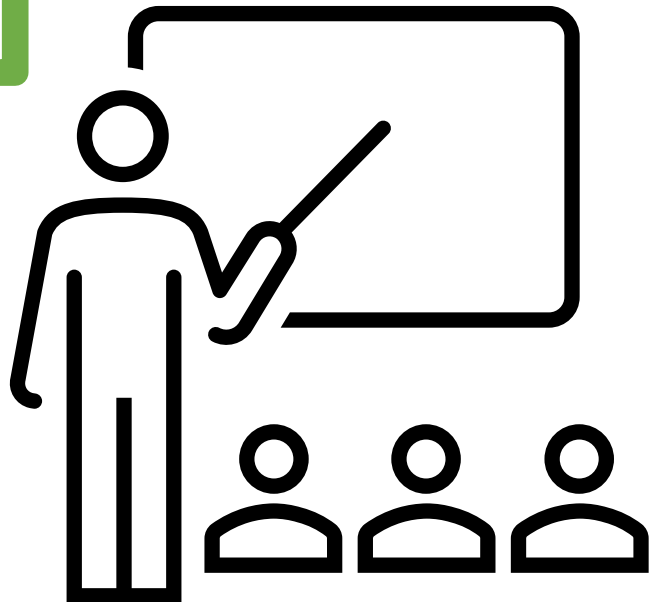
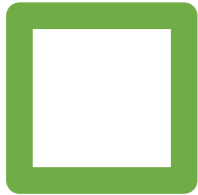
*the following slides contain some of the
examples provided in the Notice of
Funding Opportunity, which are too
extensive to reproduce fully in this
presentation*



Educational and Training Programs



Prepare, train, and educate members of disadvantaged communities on how to engage in government processes related to environmental and climate justice activities.



Examples:

- Develop or implement Equity Action Plans with a government
- Leadership Development programs
- Training program to help members of disadvantaged communities effectively participate in advisory boards, commissions, land use authorities

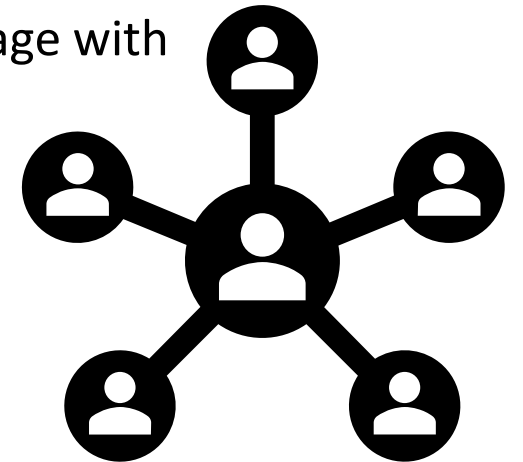
Environmental Advisory Boards

Examples:

- **Permitting** decisions for factories
- **Infrastructure upgrades** for addressing pollution
- **Zoning** and site guidance
- Actions around **workforce development, water shutoffs, and water affordability**

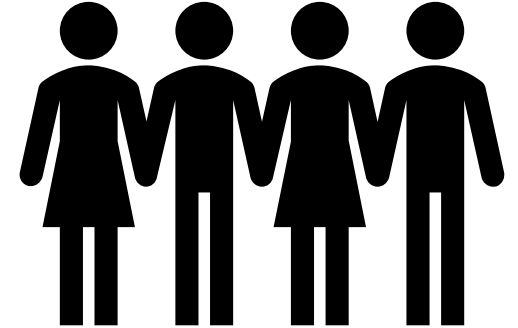
Facilitate the engagement of disadvantaged communities in environmental decision-making **by establishing:**

- advisory councils
- taskforces
- or similar bodies to engage with government



Collaborative Governance Activities

Facilitate the process of **providing recommendations** and **implementing decisions** that will benefit disadvantaged communities.



Example:

- Develop **community benefit agreements**
- Create a **governance body for brownfield post-cleanup redevelopment project**
- Create a **source water protection plan**



Use participatory budgeting to inform public spending on environmental priorities

Example:

Design a program where the community identifies problems



Evaluates proposals



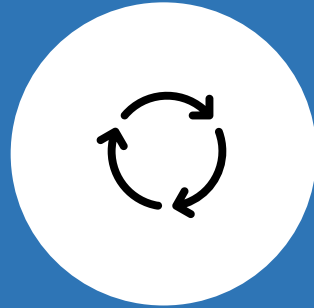
Then recommends decisions for public funding of projects that implicate environmental and climate justice issues

Participation in Governmental Funding and Budgeting Processes

Summary



\$2 billion of
funding
available



Application
accepted on a
rolling basis



Application deadline
is November 21st,
2024



NOFO allows for a
maximum of two
applications per
lead applicant



Project duration
must be 3 years or
less

[Notice of Funding Opportunity](#)

[Frequently Asked Questions](#)

Final Thoughts



Find partners
and build coalition



Identify meaningful
transformative
projects to address
environmental and
climate justice
concerns that can
be completed within
3 years ↪ (Track I)



Identify (Track II)
governmental
policies and
programs that can
be improved with
community voices



Register on
SAM.gov and
Grants.gov *now*
(this process can
take up to a month)



You can follow up
with questions at
CCGP@epa.gov



Stay up to date on
webinars by signing up
for EPA EJ listserv by
sending a blank email to
join-epa-ej@lists.epa.gov

