



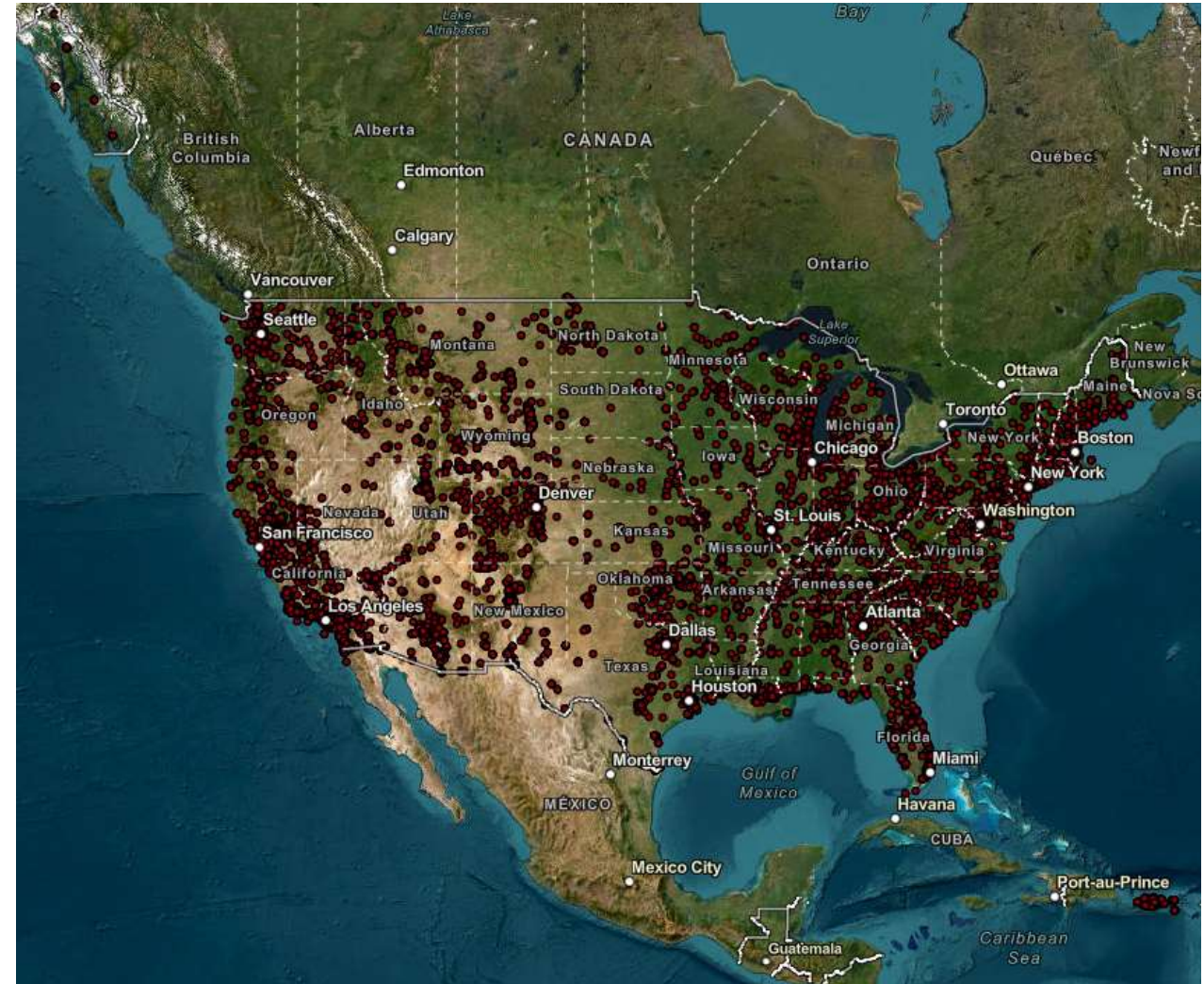
INECE Air Quality Webinar

Jane Wallace, Director
EPA/OECA/OC/ETDD



The Current State of Air Monitoring Data

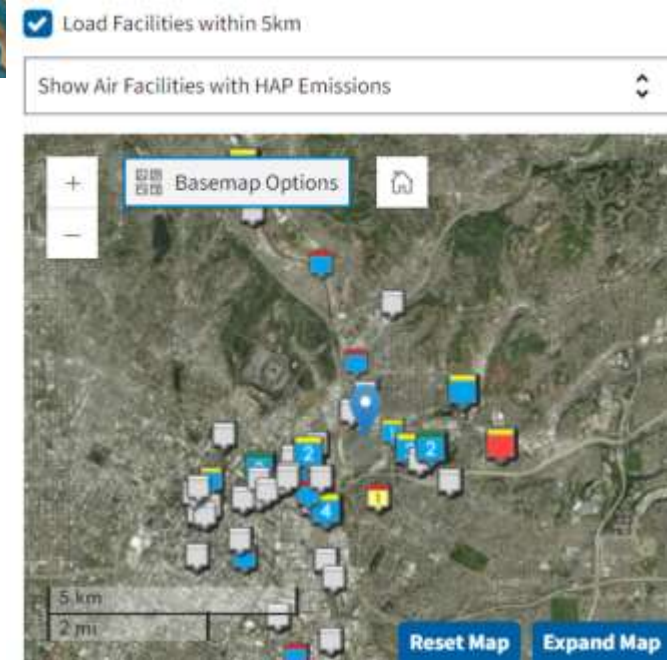
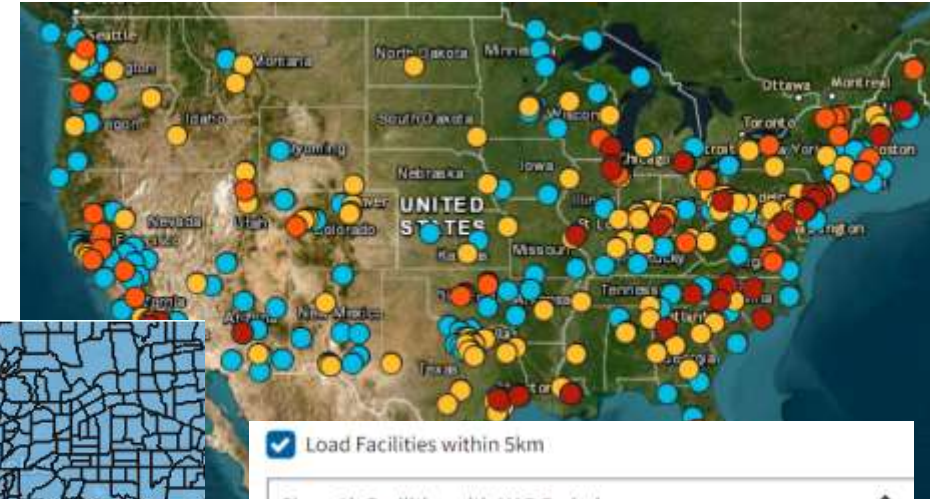
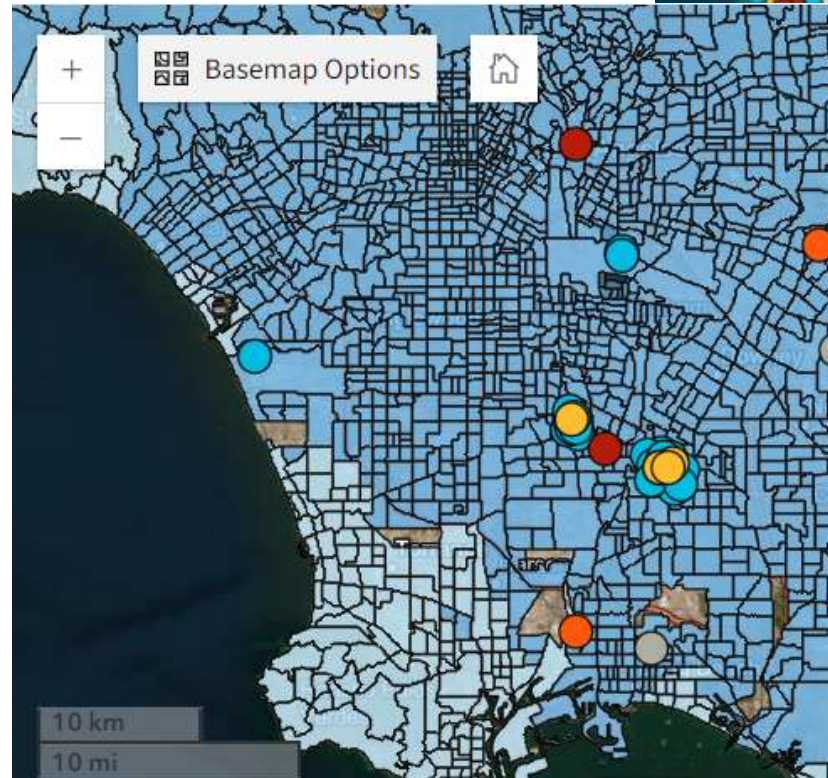
- Compilation of yearly data:
 - network stationary air monitors
 - measure ambient air quality
- Combined with other data sources
 - maintain an archive of historic monitoring data
 - starting from 1990



How EPA Uses Monitoring for Enforcement Targeting

Stationary monitoring data to identify

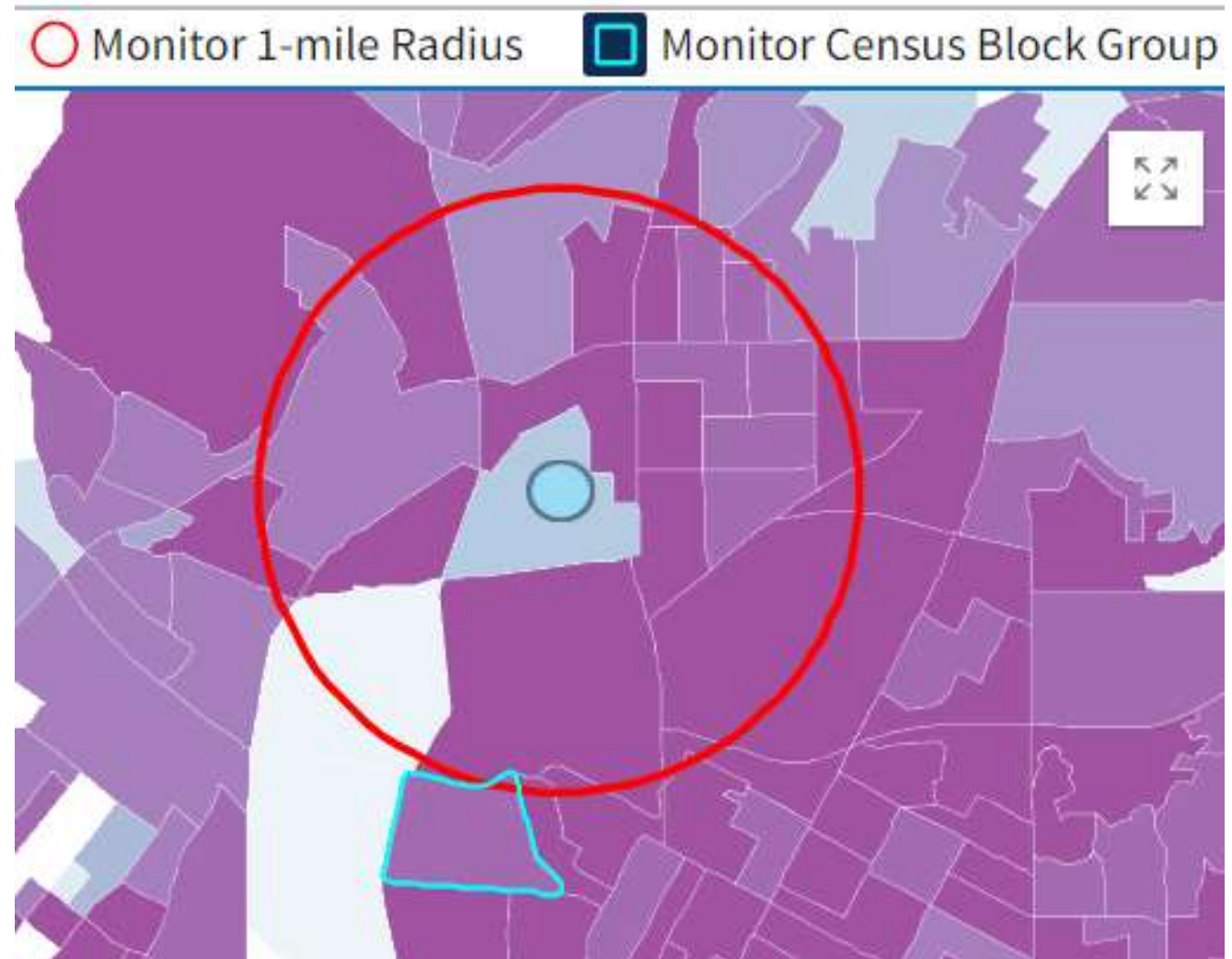
- places with high pollutant concentrations
- places with higher potential for public health impacts
- facilities emitting in those areas



Where EPA is Heading

Focus on Environmental Justice

- Cumulative risk may be high
- Importance of monitoring
- Issues: lack of data



Where EPA is Heading

- Developing data portals to process and visualize
 - satellite imagery of methane emissions
 - mobile van drives
- Issuing regulations
 - requiring monitoring at boundaries
 - certain industries for multiple pollutants
- Future large data sets:
 - across multiple monitoring platforms,
 - wider geographic coverage,
 - more real-time results,
 - clearer picture of pollution
- Monitoring to hold facilities accountable and protect vulnerable communities

