



2024 National Training Workshop

CLIMATE CHANGE CONSIDERATIONS WHEN PRIORITIZING, DEVELOPING, AND IMPLEMENTING TMDLS

Kristy Fortman, EPA Region 8





2022-Present

Priority Actions - Advance a climate ready CWA section 303(d) program



2022

OW Climate Adaptation Plan



2021

EPA Climate Adaptation Action Plan



2021

Executive Order on Tackling the Climate Crisis

EPA Climate Focus

2022-Present Progress

2022-2023

Rework existing draft
with regional
workgroup

June 2023

Outline presented at
National Workshop

July 2023- Present

Out for review:

- State
- Tribal
- External

Incorporate and
respond to comments



CLIMATE CHANGE CONSIDERATIONS



Prioritization

- Vision 2.0, 2025-year priorities within IR, and Vision commitments
- TMDLs, ARPs, Protection Plans, Revisions
- Tools



TMDL Development

- Establishing loads
- Critical conditions
- Technical approaches
- Sources and allocations
- MOS



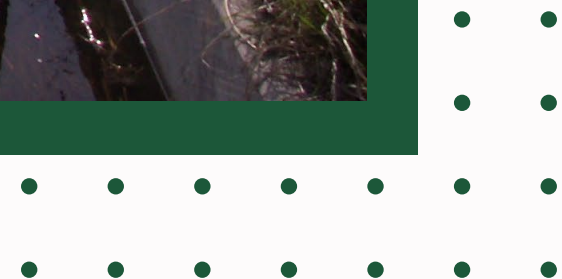
Implementation

- Climate change resilient/adaptive BMP
- Co benefits with other programs
- Monitoring and adaptive management

TMDL Development

Evaluated approaches used to address climate change within TMDLs

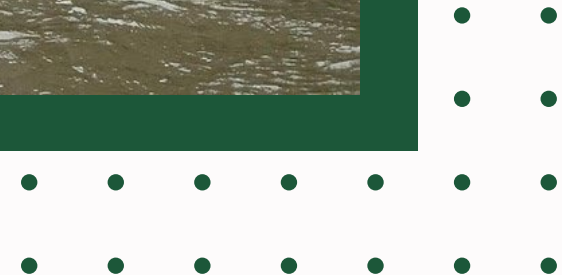
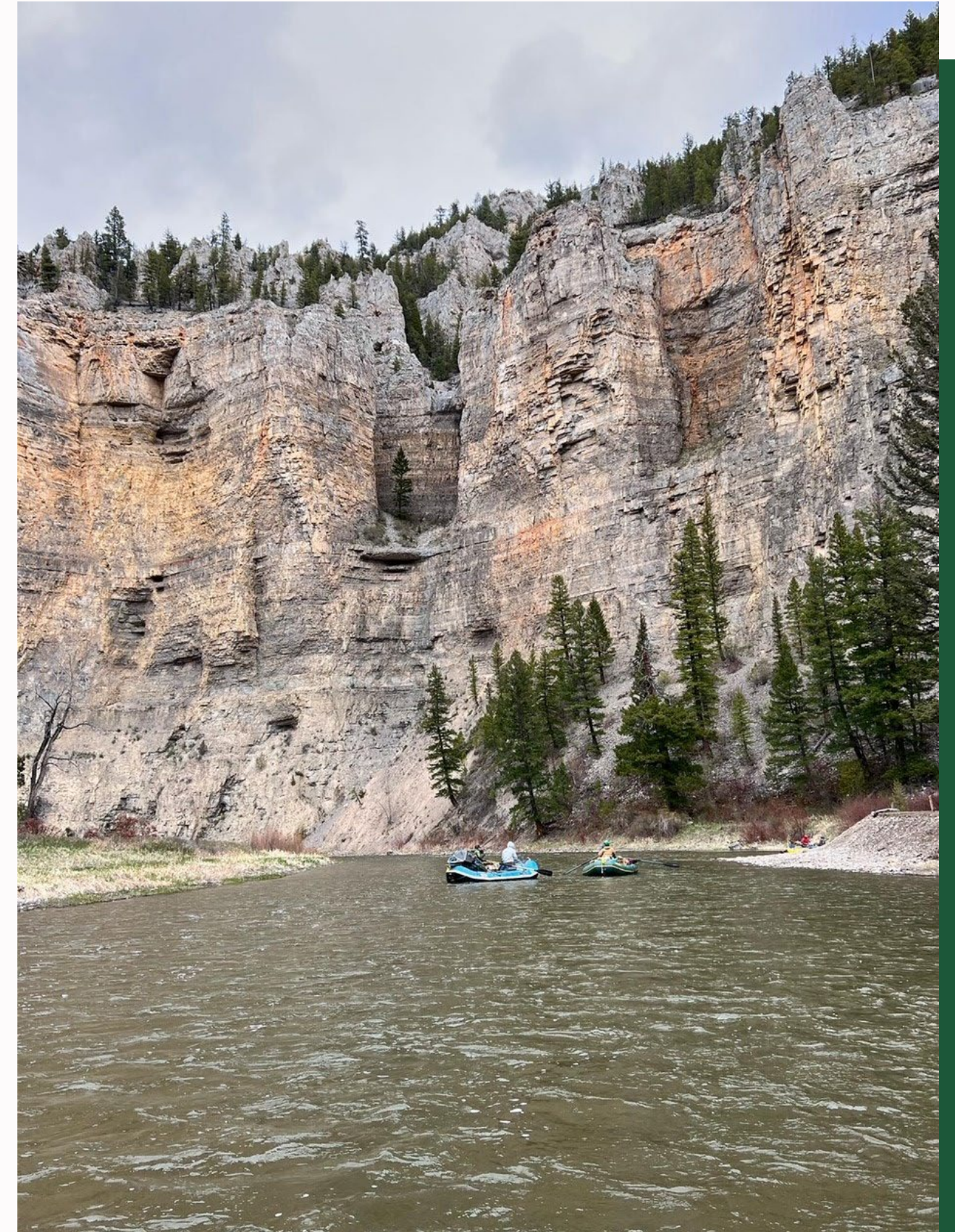
- Most common pollutants: *temperature and nutrients*
- Areas in document where climate change discussed: *loading capacity, MOS, adaptive management, and implementation*



TMDL Development

Establishing the total allowable load

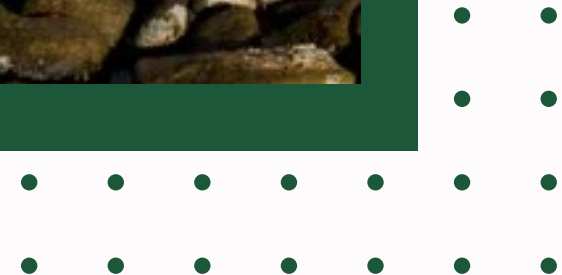
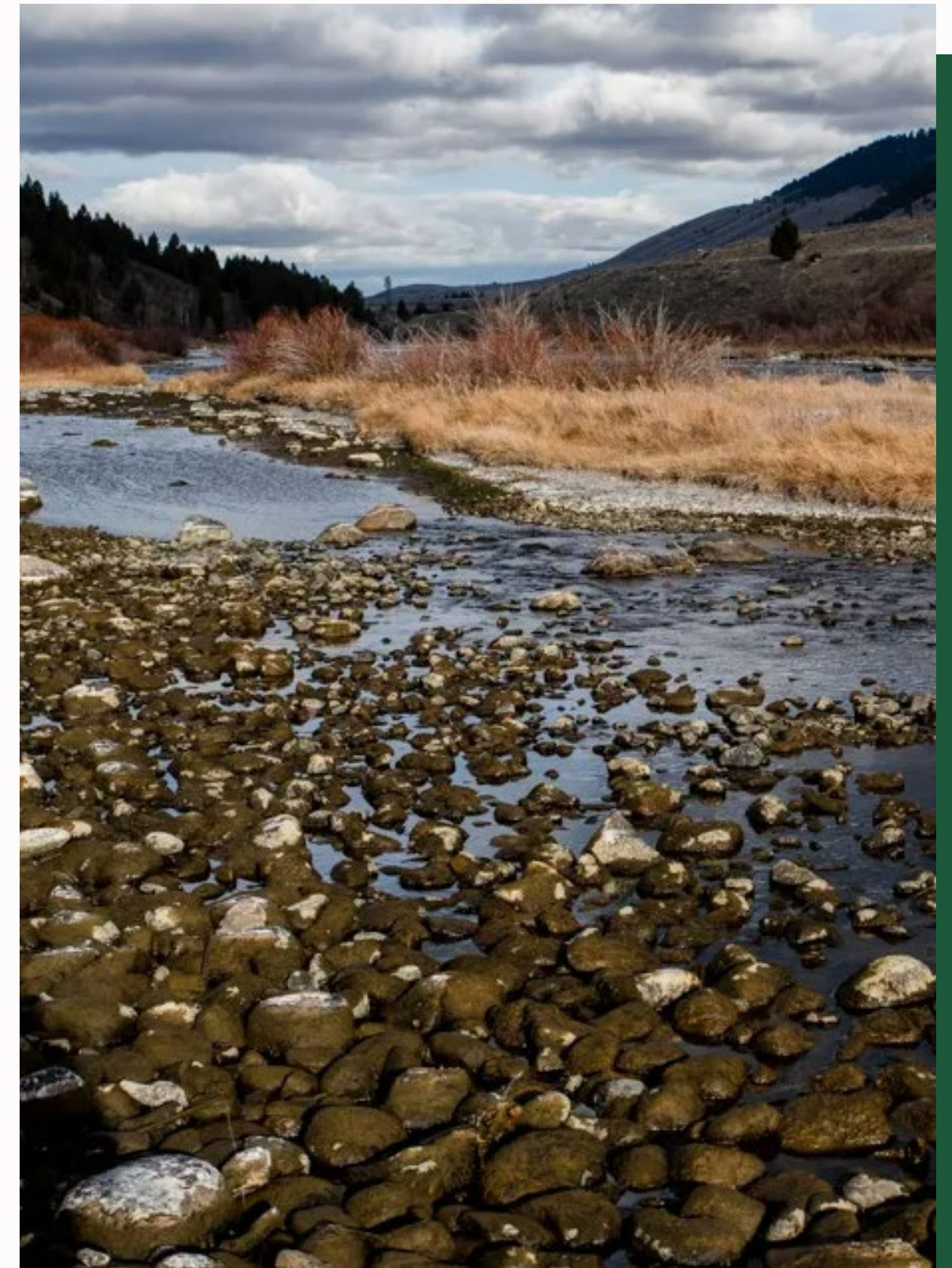
- Critical conditions
- Technical approaches
- Pollutant source loadings and allocations
- MOS
- Strategies for evaluating effectiveness



TMDL Development

Establishing the total allowable load

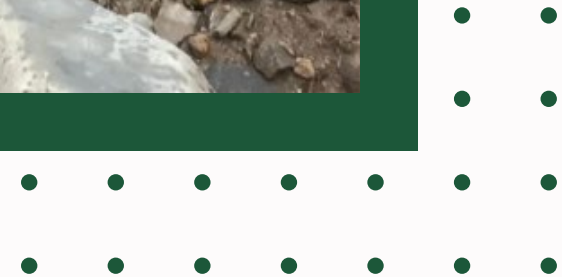
- Critical conditions
- Technical approaches
- Pollutant source loadings and allocations
- MOS
- Strategies for evaluating effectiveness



TMDL Development

Establishing the total allowable load

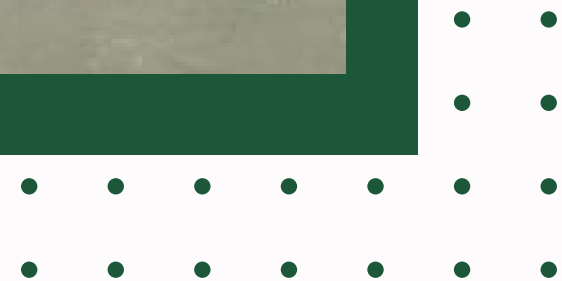
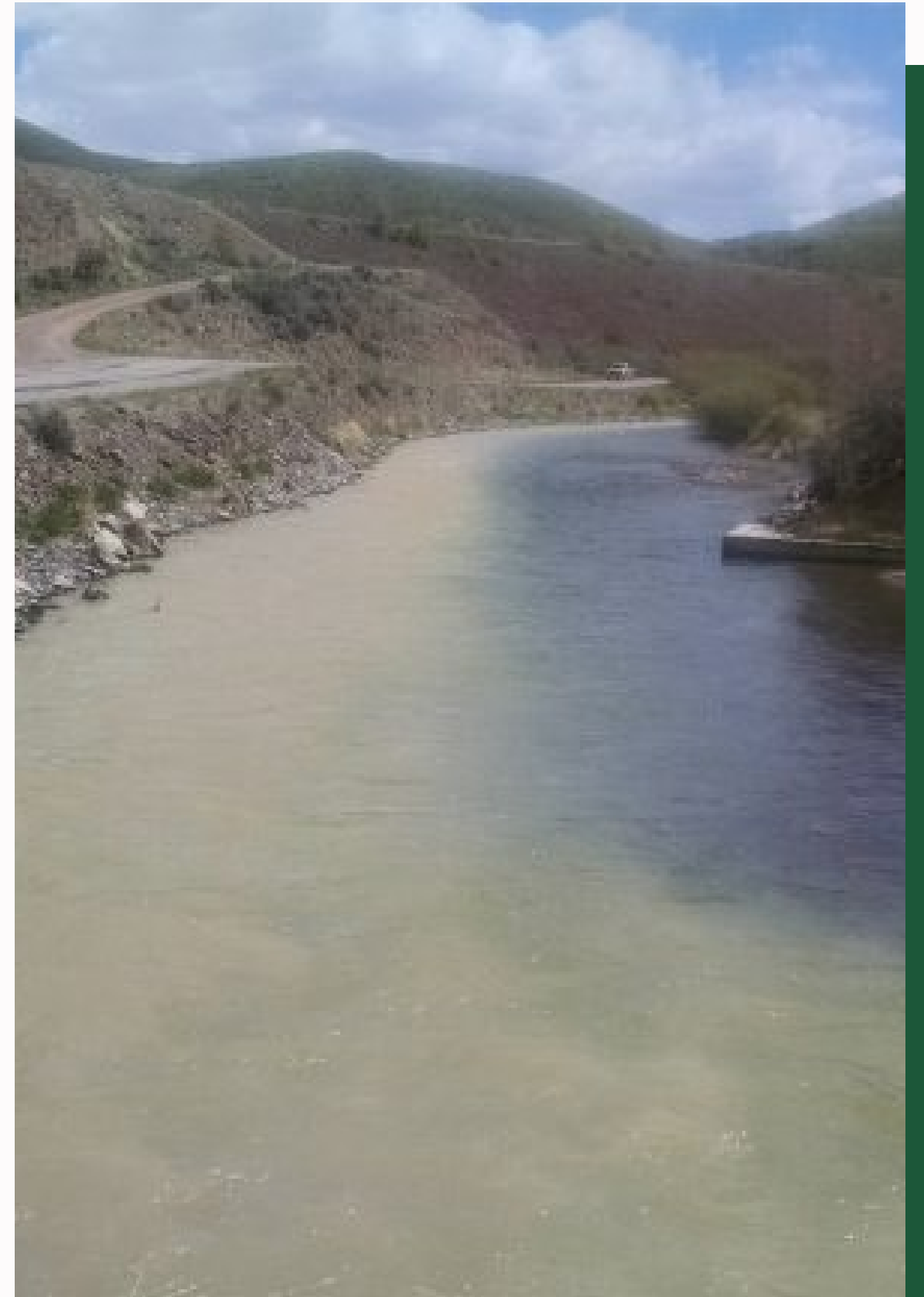
- Critical conditions
- Technical approaches
- Pollutant source loadings and allocations
- MOS
- Strategies for evaluating effectiveness



TMDL Development

Establishing the total allowable load

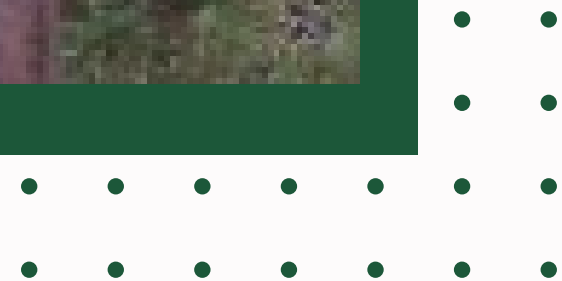
- Critical conditions
- Technical approaches
- Pollutant source loadings and allocations
- MOS
- Strategies for evaluating effectiveness



TMDL Development

Establishing the total allowable load

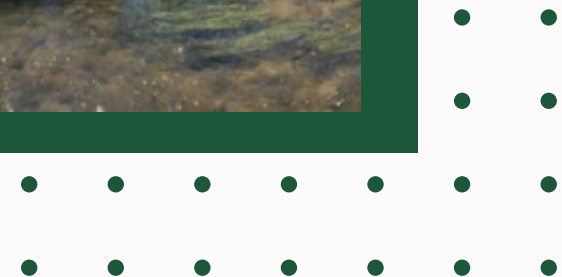
- Critical conditions
- Technical approaches
- Pollutant source loadings and allocations
- MOS
- Strategies for evaluating effectiveness



TMDL Development

Establishing the total allowable load

- Critical conditions
- Technical approaches
- Pollutant source loadings and allocations
- MOS
- Strategies for evaluating effectiveness





THANK YOU

Kristy Fortman



406-457-5001



fortman.kristy@epa.gov



U.S. Environmental Protection Agency
Region 8, Montana Office
10 West 15th Street, Suite 3200
Helena, MT 59626

