



Resilience and Continuity Despite Staff Changes: A Tribal Perspective

KAYLA BOWE, RED LAKE NATION

JUNE 5, 2024

2024 NATIONAL TRAINING WORKSHOP ON
WATER QUALITY ASSESSMENT AND PLANS



Outline



- Background of Red Lake
- Tribal program structure
- Problems with continuity
- How to make EPA-required documents more useful
- Utilizing networks and partnerships
- Questions

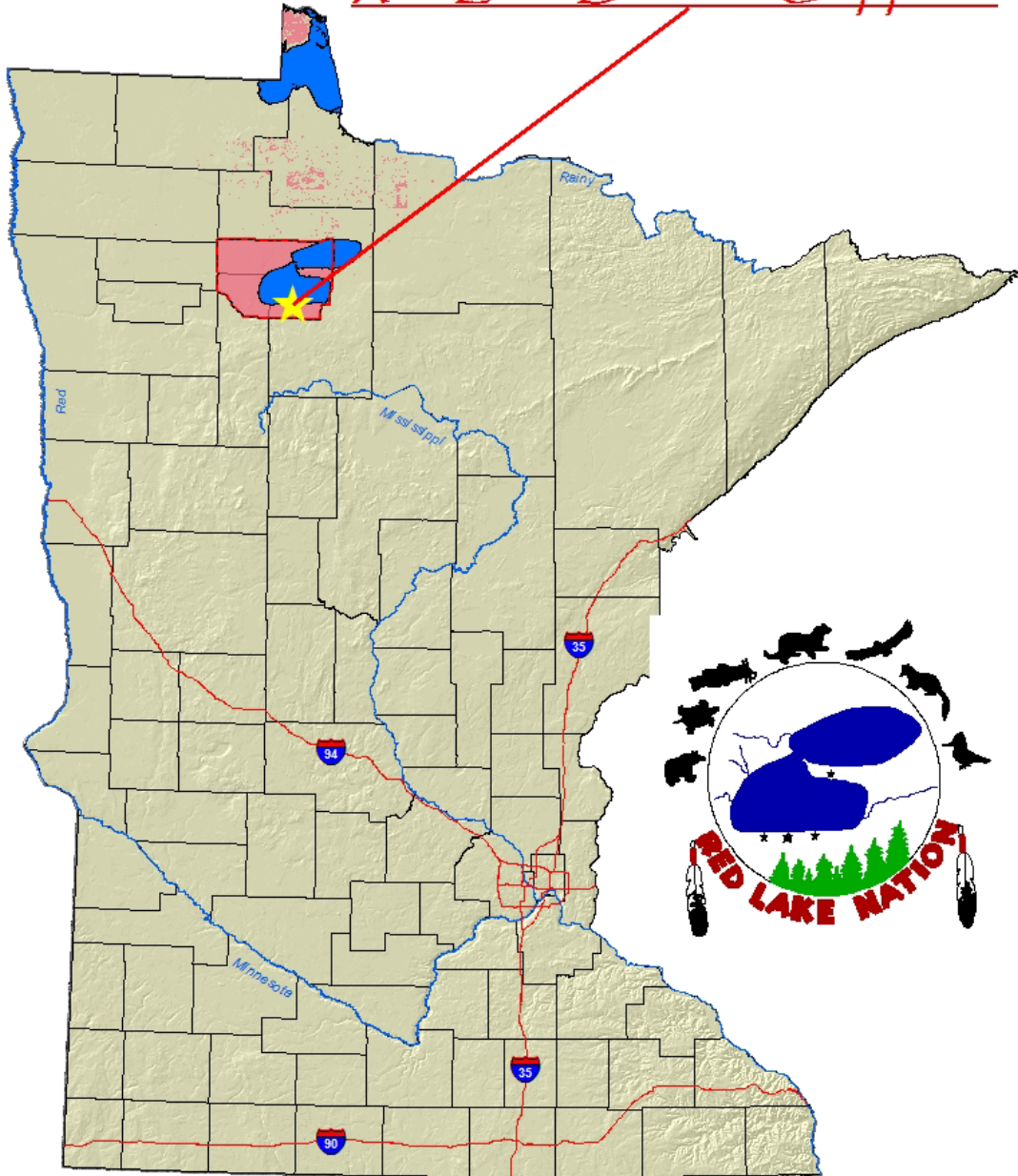


Background of Red Lake



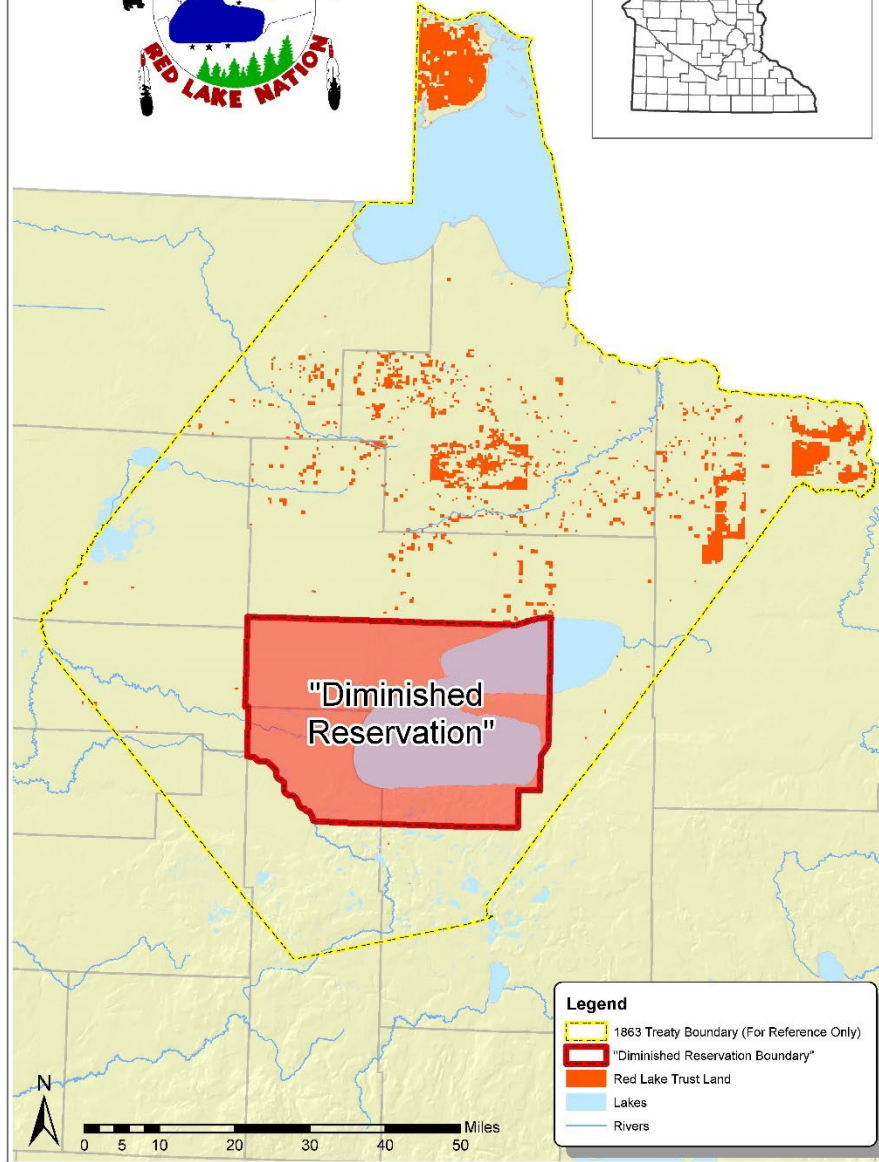
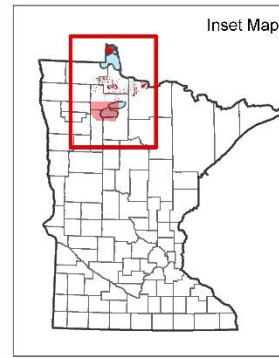


Red Lake Band of Chippewa





Red Lake Reservation & Restored Ceded Lands



Legend

- 1863 Treaty Boundary (For Reference Only)
- "Diminished Reservation Boundary"
- Red Lake Trust Land
- Lakes
- Rivers



Water Resources Program



- ~850,000 acres of Trust Land
- Upper and Lower Red Lake ~284,000 acres
- 135 small lakes
- 371 miles of rivers/streams

- Program Staff:
 - Program Director
 - 2 Biologists
 - 2 Technicians
 - 0.5 Wetlands Specialist
 - 0.5 Hydrologist
 - 0.5 Environmental Specialist
 - Summer Interns and Graduate Students
 - Hiring Environmental Specialist & Climate Change Specialist



Tribal Program Structure





Tribal Program Structure



- **Varies by Tribe**
- **Some only have one water resources staff**
- **Some personnel split between programs**
- **Inconsistent Funding**
 - EPA
 - BIA
 - Tribe



Tribal Program Structure



- Varies by Tribe
- Some only have one water resources staff
- Some personnel split between programs
- Inconsistent Funding
 - EPA
 - BIA
 - Tribe

- **EPA Programs**
 - CWA 106
 - CWA 319
 - WPDG
 - CWA 303(c)/401
 - CWA 402
 - CWA 404
 - CWA 303(d)?



Problems with Continuity





Problems with Continuity



- **Small Programs and Turnover**
 - 1 staff, turnover of 1 = 100%
 - Spread too thin for crossover training
- **Inconsistent/Low-level Funding**
 - Funding hasn't kept up with inflation
 - Can't pay competitive wage
 - ✦ Stepping-stone position
 - Mission Creep



Making EPA Documents More Useful





EPA Documents



- QAPPs
- Monitoring Strategy
- Wetland Program Plan
- Assessment Methodology
- SOPs



EPA Documents



- QAPPs and Monitoring Strategies
 - Lots of required information



EPA Documents



- QAPPs and Monitoring Strategies
 - Lots of required information
 - Include additional information useful to a new employee
 - ✦ Site Rationale: What site are you sampling? Why? How did you come to this conclusion? What is the frequency of sampling? What parameters are you sampling? Include metadata.
 - ✦ Data location: Where is it stored? Is it backed up?
 - ✦ Story Maps



EPA Documents



- **Assessment Methodologies**
 - What are your water quality criteria?
 - What are your designated uses?
 - What is your assessment window?
 - How many data points are needed to make a determination?



Networks and Partnerships





Existing Networks & Partnerships



- **Regional Tribal Networks**
 - Region 5 Tribal Programs
 - ✦ Annual TEPM Conference
 - ✦ Monthly Calls
 - Region 5 Tribal Water Workshop – Every 2 years



Existing Networks & Partnerships



- Regional Tribal Networks
 - Region 5 Tribal Programs
 - ✦ Annual TEPM Conference
 - ✦ Monthly Calls
 - Region 5 Tribal Water Workshop – Every 2 years
- **State Agencies**
 - Minnesota Pollution Control Agency
 - Minnesota Department of Natural Resources



Existing Networks & Partnerships



- Regional Tribal Networks
 - Region 5 Tribal Programs
 - ✦ Annual TEPM Conference
 - ✦ Monthly Calls
 - Region 5 Tribal Water Workshop – Every 2 years
- State Agencies
 - Minnesota Pollution Control Agency
 - Minnesota Department of Natural Resources
- **Federal Agencies**
 - USGS
 - USFWS
 - NRCS



Existing Networks & Partnerships



- Regional Tribal Networks
 - Region 5 Tribal Programs
 - ✦ Annual TEPM Conference
 - ✦ Monthly Calls
 - Region 5 Tribal Water Workshop – Every 2 years
- State Agencies
 - Minnesota Pollution Control Agency
 - Minnesota Department of Natural Resources
- Federal Agencies
 - USGS
 - USFWS
 - NRCS
- **Local Organizations/Government Units**
 - SWCDs, Watershed Districts



Project Collaboration



- Unexpected benefit of project collaboration
 - Can provide continuity



Utilizing Same Equipment

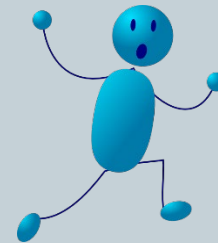


- Same as partner tribes, agencies, etc.
 - Shared SOP
- Rely on network to train staff
- Troubleshoot issues



Final Thoughts

- Documentation!
- Documentation!
- Documentation! (But *useful* documentation)





Questions?



KAYLA BOWE, RED LAKE BAND
KAYLA.BOWE@REDLAKENATION.ORG

